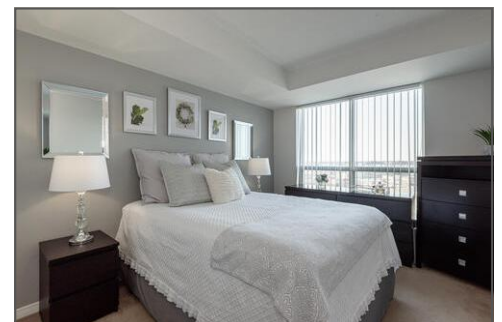


4850 Glen Erin Dr Apt 801

Mississauga, ON L5M 7S1



i About the Property:

Luxury Papillion Condo Near Erin Mills Mall. Gorgeous, Updated, Quality! No Shortcuts Here. Low Maintenance Fees With Tons of Amenities. Spacious Kitchen With Granite Counters, Upgraded Cabinets, Stainless Steel Appliances. Open Concept Living and Dining Area With Beautiful Unobstructed North Views. Clean Finish Will Surely Impress S/S Fridge, Stove, Dishwasher. Washer, Dryer, All Light Fixtures, All Window Coverings. Walking Distance To Erin Mills Mall, Transit, Highways, Schools. Amenities Include Swimming Pool, Gym, Party Room, Concierge.



Price
499000



Beds
1



Baths
1



House Size
600-699



Type
Condo



Produced by DAREX STUDIO

W5136481